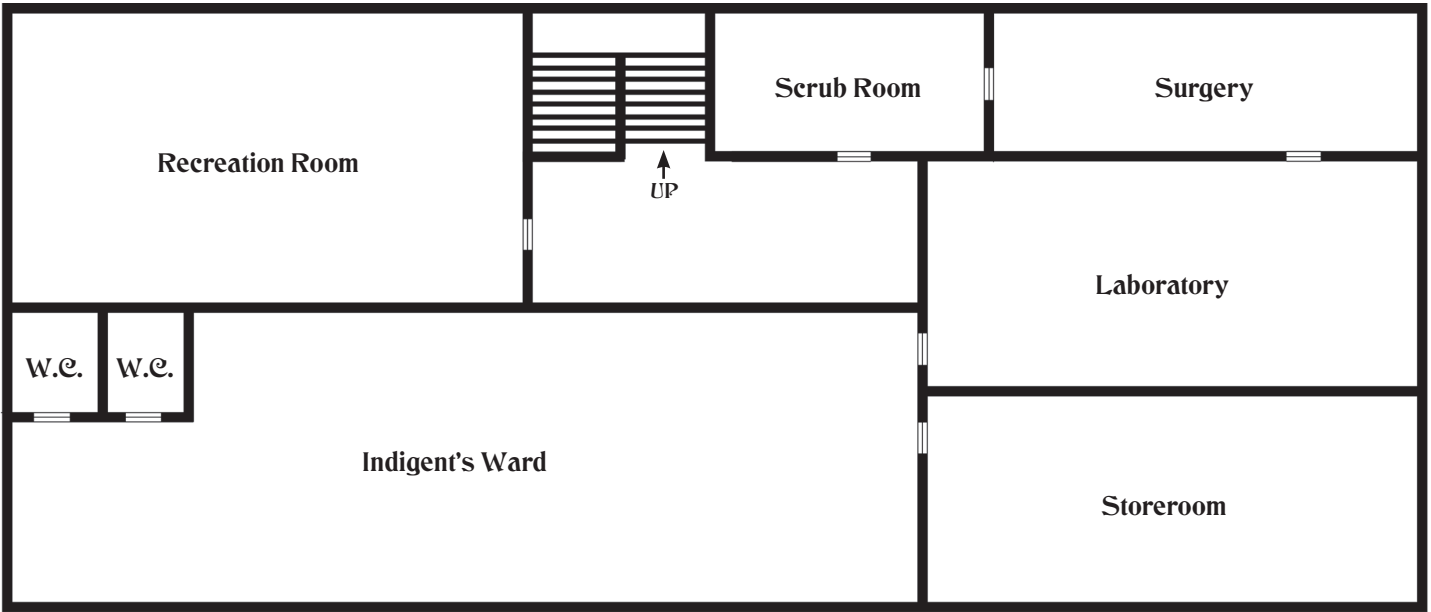
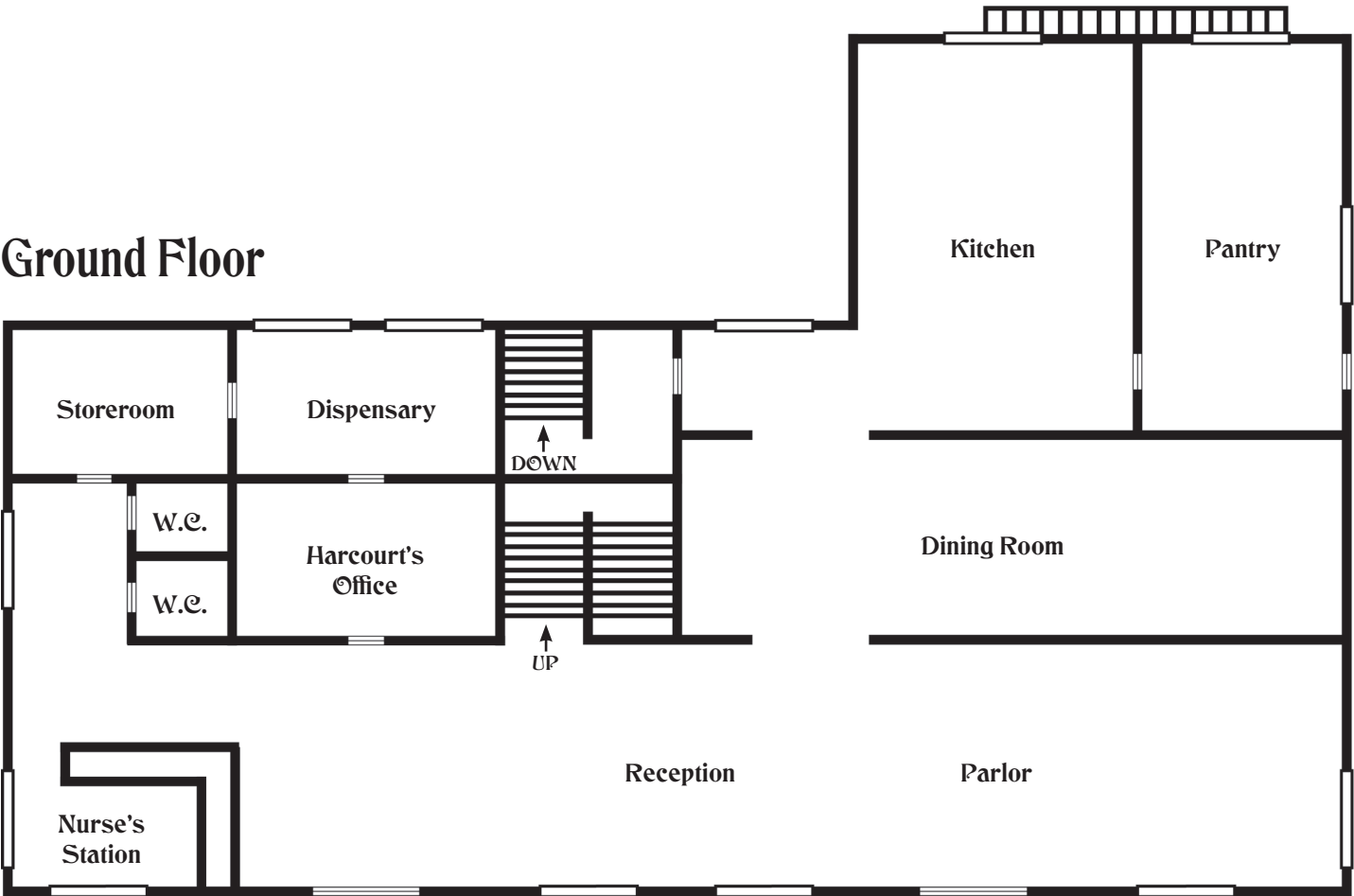


Arkham Sanitarium

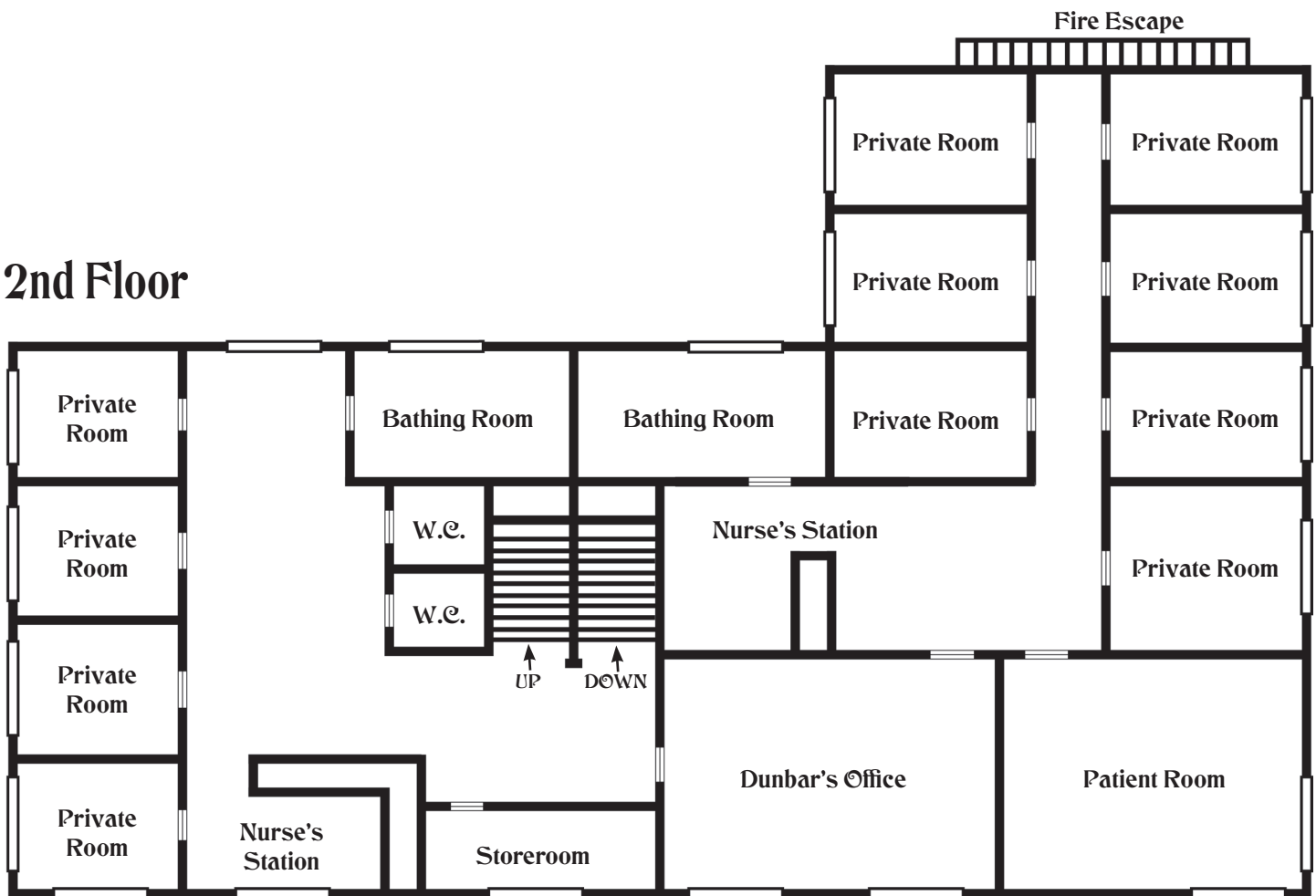
Basement



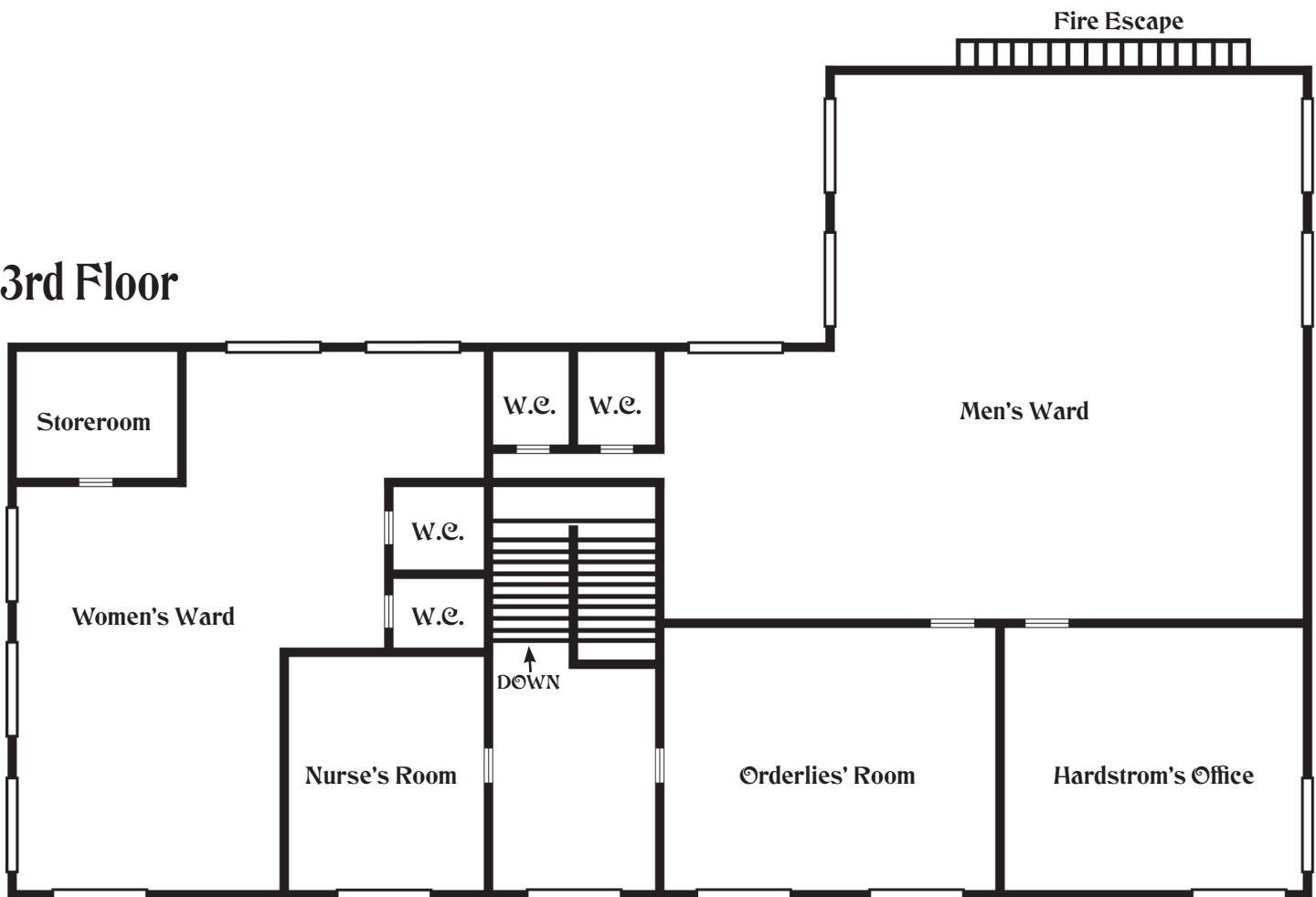
Ground Floor



2nd Floor

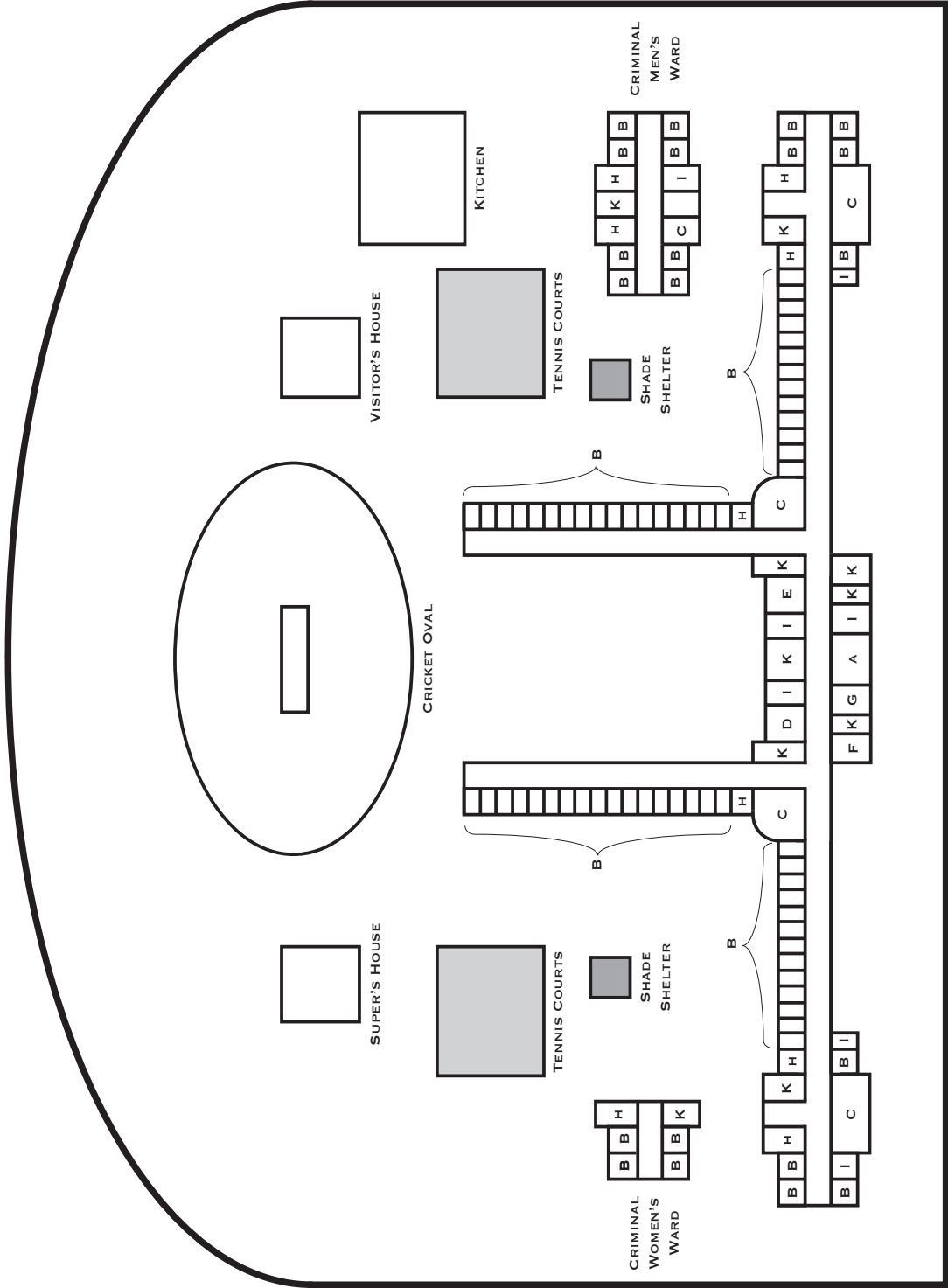


3rd Floor



BETHLEHEM ROYAL HOSPITAL

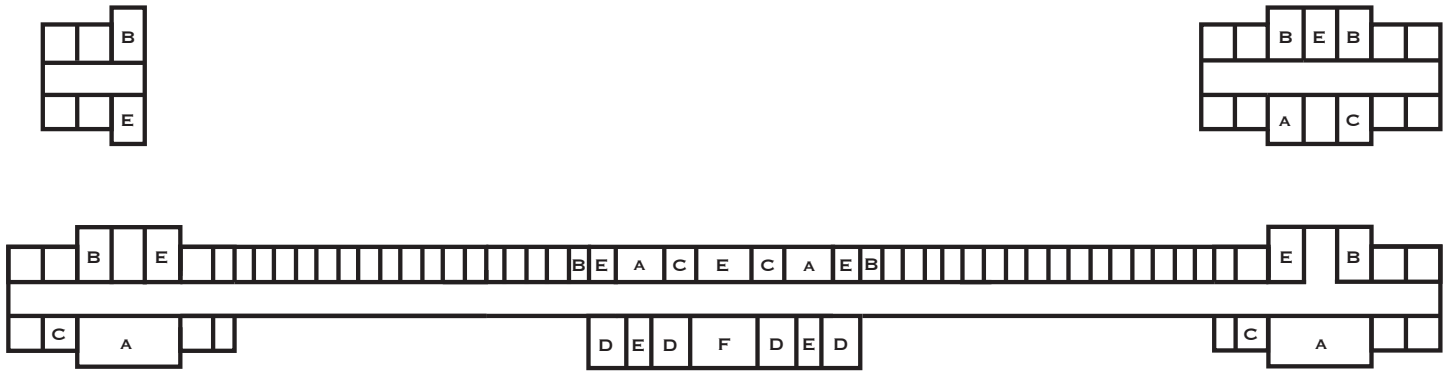
GROUND FLOOR AND SURROUNDING ENVIRONS



- A. ENTRY HALL
- B. PATIENT'S ROOMS
- C. DAY ROOMS
- D. PHYSICIAN'S ROOM
- E. VISITOR'S ROOM
- F. STEWARD'S ROOM
- G. PHARMACY
- H. KEEPER'S ROOMS
- I. STOREROOMS
- K. STAIRS

BETHLEM ROYAL HOSPITAL

SECOND FLOOR



ALL SMALL UNMARKED ROOMS ARE PATIENTS' ROOMS

A. DAY ROOMS

B. KEEPER'S ROOMS

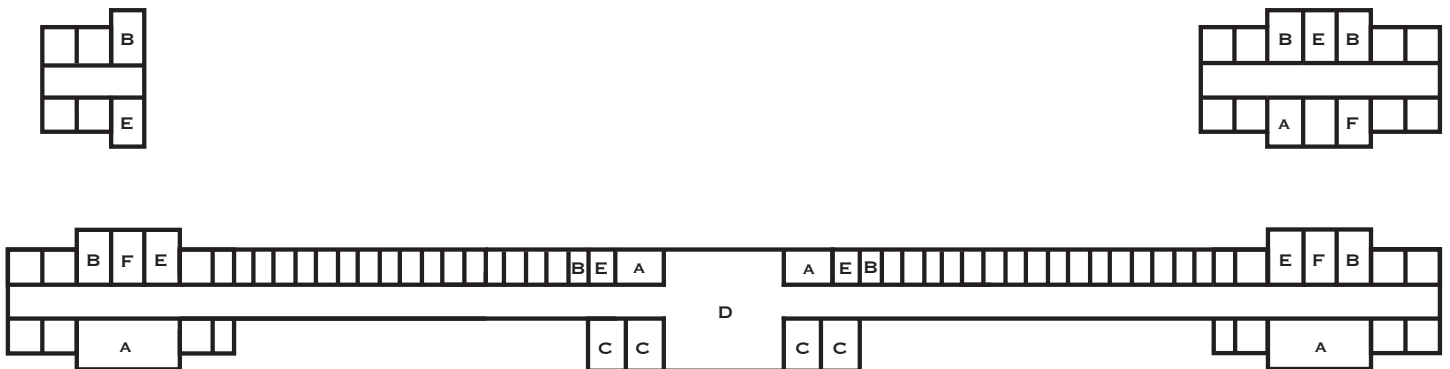
C. STOREROOMS

D. STAFF APARTMENTS

E. STAIRS

F. CHAPEL

THIRD FLOOR



ALL SMALL UNMARKED ROOMS ARE PATIENTS' ROOMS

A. DAY ROOMS

B. KEEPER'S ROOMS

C. STAFF ROOMS

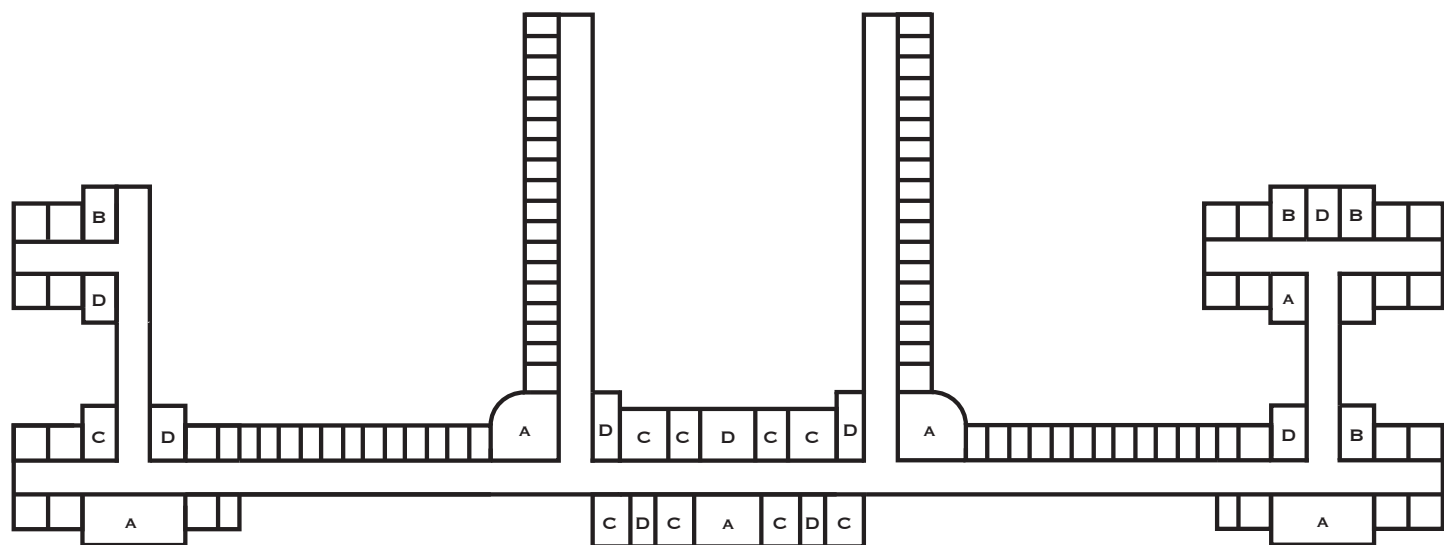
D. CHAPEL

E. STAIRS

F. STOREROOMS

BETHLEM ROYAL HOSPITAL

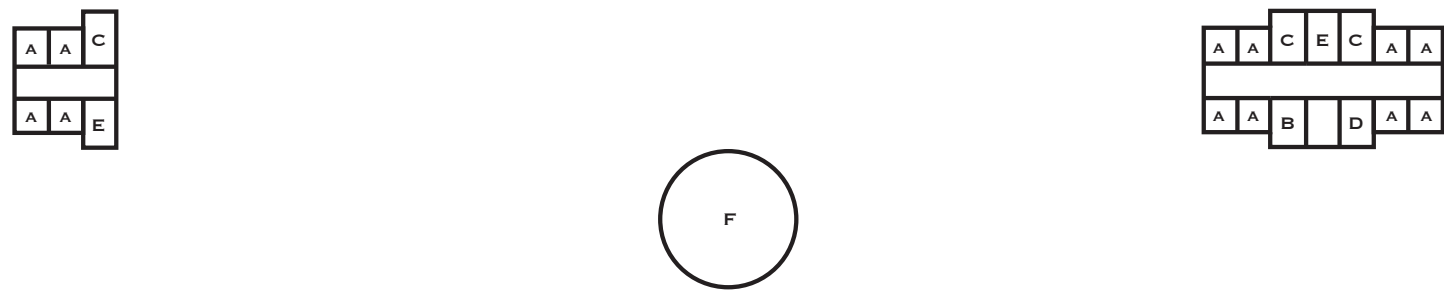
BASEMENT



ALL UNMARKED ROOMS ARE PATIENTS' ROOMS

- A. DAY ROOMS
- B. KEEPERS' ROOMS
- C. STOREROOMS
- D. STAIRS

FOURTH FLOOR

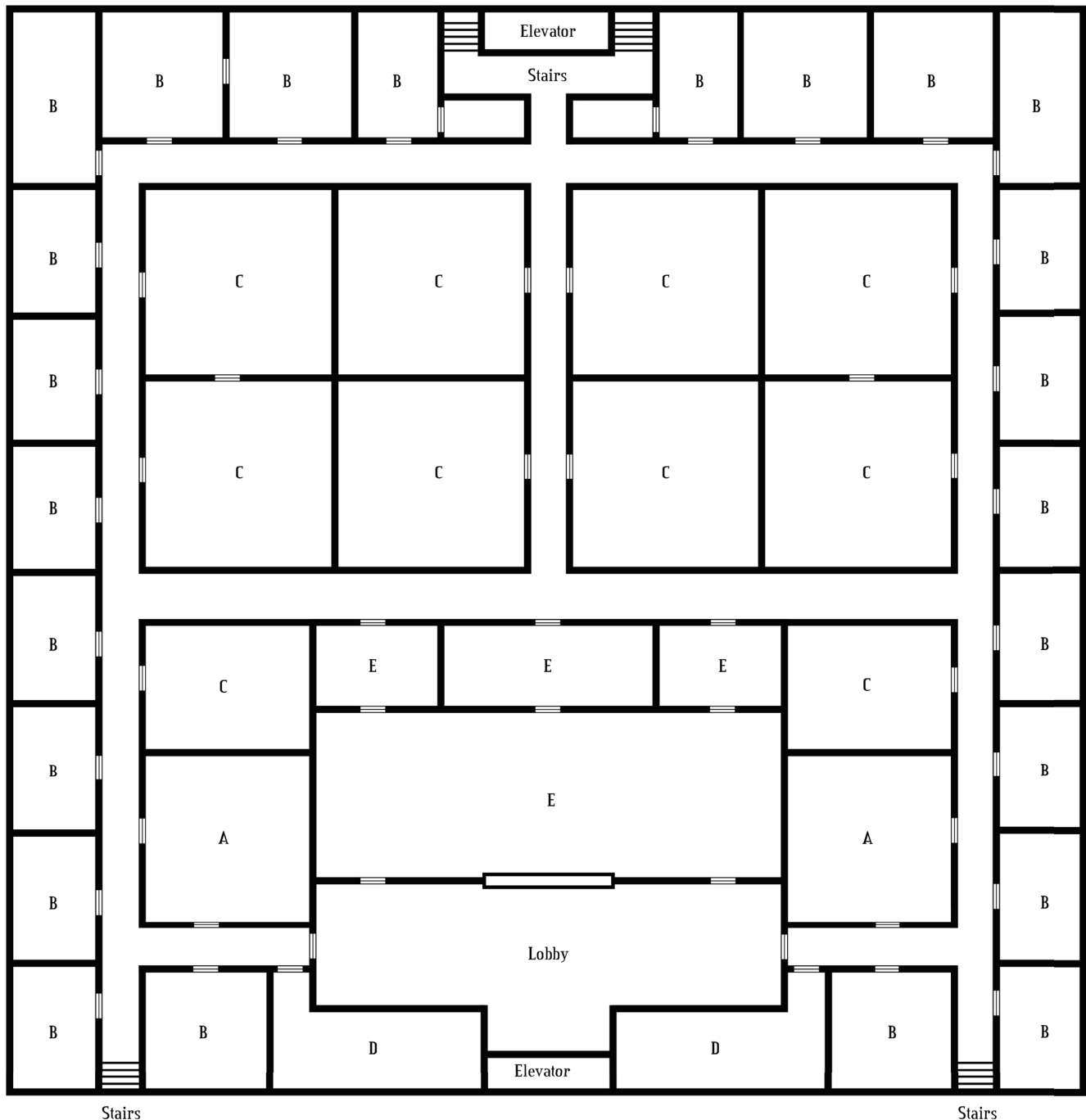


- A. PATIENTS' ROOMS
- B. DAY ROOMS
- C. KEEPERS' ROOMS
- D. STOREROOM
- E. STAIRS
- F. DOME

Bellevue Hospital

17th Floor

- A. Examination Room
- B. Personal Offices
- C. Research/ Treatment Room
- D. Storeroom
- E. Main Psychiatric Offices



Bellevue Hospital

18th-22nd Floors

Unlabeled rooms are
2-person patient rooms

A. Nurse Station

B. Day Room

C. Storeroom

D. Large Ward

